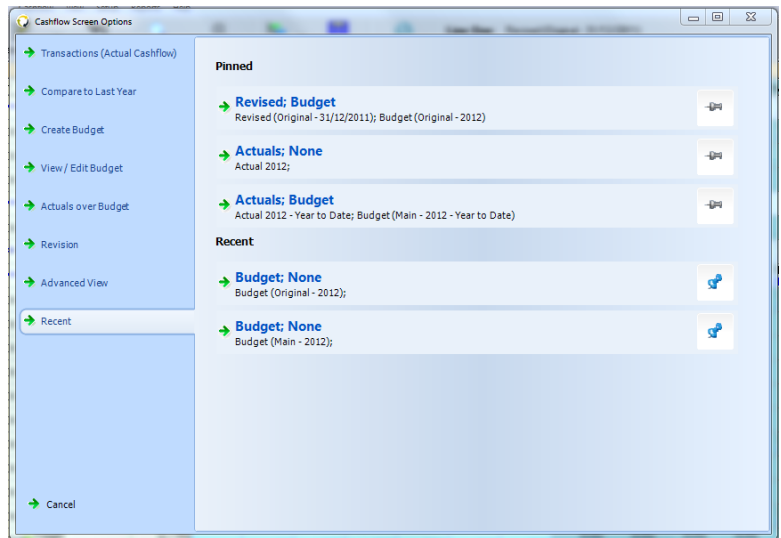


- Version: 4.4a
- Released Thursday 25<sup>th</sup> January 2012
- Environment Desktop and ONLINE
- Data compatibility: 3.7 to 4.3

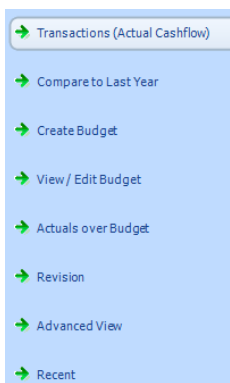
## Cashflow Screen Options

A new Cashflow Options screen will assist both budgeting and non-budgeting users to achieve new benefits from their use of Cashmanager RURAL.

- The new screen presents a list of task based solutions.
- A “Recent” list provides for the retention of favourite display combinations - allowing quick re-selection.



## Cashflow Screen Options



The **Cashflow Screen Options** will display when a user navigates to the Cashflow screen. Each option presents different selection criteria, which is displayed on the right hand side of the screen.

### Recent

Clicking on the pin will store your favourite Cashflow display – allowing quick re-selection.

### Change View

When working in the Cashflow screen, to change which cashflow is displayed click on the **Change View** button.



## User Benefits

### Transaction only users

The Cashflow option of **Compare to Last Year** is very useful. An even better option may be to select **Advanced** and compare this year to the same period of last year.

### Learner Budget

The Revised view provides powerful management support. Learning how to drive this will be easier using the new **Cashflow Screen Options**.

### Power Budgeting

By pinning your favourite views within the Recent list, switching between favourite views will be much quicker.

The Year to Date (YTD) displays in **Actual over Budget** and **Advanced** will be popular.

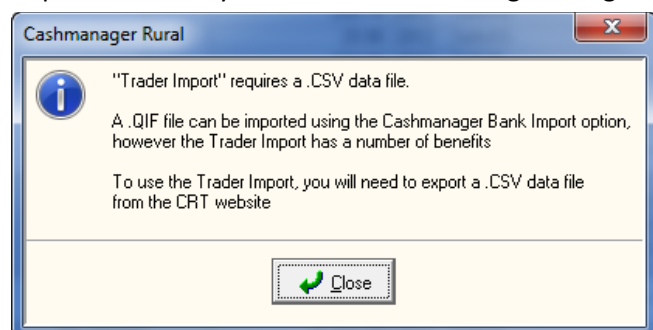
## TRANSACTIONS

### Bank Transactions Import - Retaining Note

A new option added to Setup/Online Banking allows users to select "Use original note from Bank" when importing data into Cashmanager RURAL rather than having the Cashmanager code note overwrite the original Bank note.

### Trader Imports – CRT

You are only given the option to import a .CSV file when importing CRT Statements now. If you try to import a .QIF file you will see the following message:



### Setup Online Banking – QIF

Under Setup/Online Banking there is now a QIF banking option. When QIF is selected, users will be able to import QIF files via Import/QIF.

## CASHFLOW

### Cashflow Screen Options

See previous page

### Image

Users can now add an image to their reports and it will appear in the top right hand corner. To add an image it is under Cashflow (on the toolbar), Edit and Notes.

### Notes

The notes entered are now per Budget and they will appear in the left hand corner of the footer when the option "Cashflow note to appear on the 1st page of reports" is ticked. To add a note, it is under Cashflow (on the toolbar), Edit and Notes.

### Move Budget Items

The following issues have been fixed:

- Select a budget item to move from future to past and it now moves the budget item
- It now displays the GST exclusive amounts at 15%
- When Enter-as-tab option is ticked, pressing Enter no longer closes the Move Budget Items window

### Save Original

This is a **new feature** which allows users to save an original copy of a budget. The Save Original option is under Cashflow (on the toolbar) and is enabled when the view for Line One is Budget and the year selected is within an open year or is the 'next' budget year. Users also have the option to put a password on an original budget and this is to further protect it from un-intentional changes. When an original budget is selected, the user will be prompted to view it either for editing or read only and where applicable, a password.

### This Season's – Change Extended Code Type

Change This Season's type from Milk Solids to Product and the information entered into the Dairy Calculator will now appear within the budget worksheet. If you change it from Product to Milk Solids, the user will need to re-enter the Milk Solid information into the Dairy Calculator.

## LICENSING

### Limited Licenses

The limited license is intended for users that already pay for a full database and wish to use another database for an associated entity that has a very limited number of transactions. An example would be a land owning entity which pays interest and rates and receives rental. The current price is \$50.00 p.a.

Any database with a serial number starting with DBL will enforce the limited license terms.

Limited Licenses have the following restrictions:-

- Cashbook only functionality – transactions, GST, transaction reports only.
- A limit of 150 transaction lines per year.

New serial numbers will be issued to users that operate a database under the limited license terms at the time of their annual renewal.